

GEOPHINEX

World's Best Detectors

GEOPHINEX

GP



GEOPHINEX

GEO-LOCATOR (GP-GLM)(Water & Metal)



USER MANUAL



DEVICE COMPONENT LIST

1. Long Range Locator System:



2. Transmitting Antenna

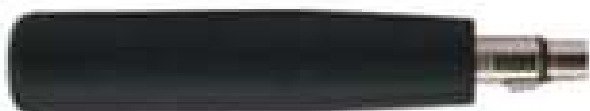


3. Receiving Antenna





4. Handle



5. Power Bank



6. Charger





WORKING PROCEDURE

1. Connect Handle To Device



2. Connect The Receiving and Transmitting Antennas

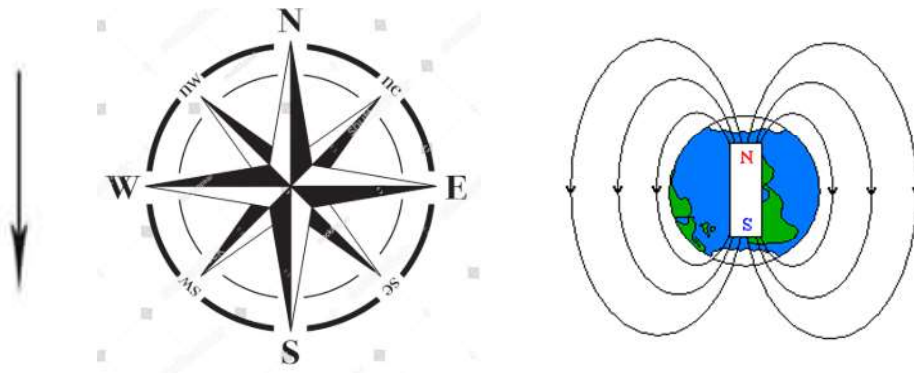




HOW TO OPERATE THE DEVICE

Finding Water:

- 1) The Device is switched ON by using the ON-OFF switch on the side of the device
- 2) The unit initializes and goes to the next screen
- 3) The Device Works on 3 Languages (English, German, and French). Select your option by touching the screen.
- 4) The scanning range will then appear on display. You can enter appropriate value on the screen. For example (default selection value is 200 feet). This can be incremented or decremented by the '+' symbol and '-' symbol on both sides of the scan setting range window. Minimum Default setting is 200, this cannot be decremented. Now press the search screen for bore-well location finding.
- 5) The search screen will appear, which will start the device. There will be intermittent beep sound to indicate the search in progress.
- 6) The device should be pointed or positioned towards south direction during the initial phase of the start process.

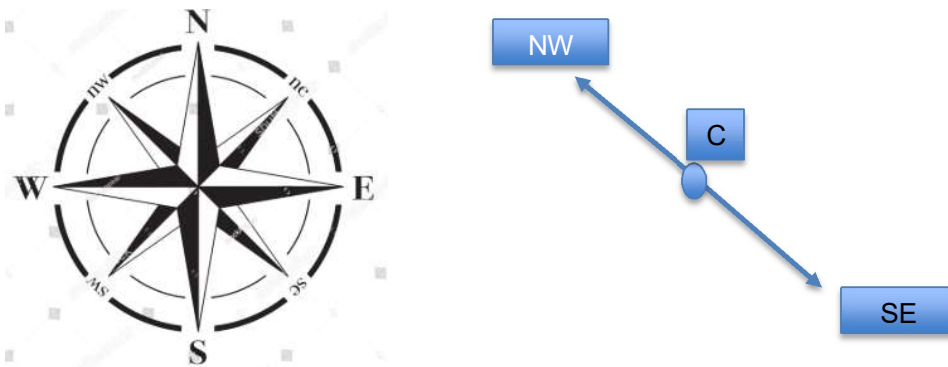


- 7) The search is started by holding the device on the hand
 - a) The device will turn towards right-side, if the target is on the right side
 - b) If the target is on the left side, the device will turn towards left-side
 - c) Device will turn back(180 degree)/rotates, when you pass/near the target
 - d) Then you can stop & point the target 5 Meter Square
 - e) After detecting the target confirm the target from each direction





- 8) Mark the center point of the target, this is defined as the Target point/ Bore-Well point
- 9) From the Bore point, make cross lines in the direction of North (N) to South (S) and another line running from East (E) to West (W). The two drawn lines meet at target point/Bore point.
- 10) For calculating aquifer depth or fracture depth, now draw lines @ 45 degree in the direction of North East (NE) and North West (NW). Similarly, draw another 2 lines at 45 degree towards South West (SW) and South East (SE) as shown below:

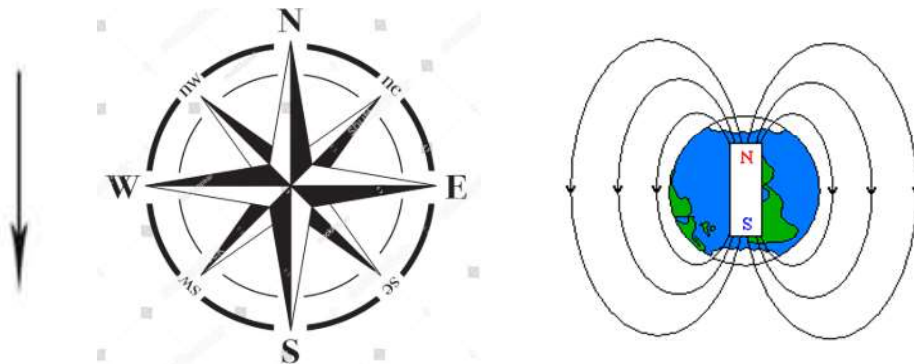


- 11) Standing at the center point (C), press the depth calculation display on the screen, the search for depth calculation begins. Now, pointing the machine towards NW, move in that direction along the line drawn as said in point no.10. The Machine will turn back 180 degree after few feet's of movement. Return to center point.
- 12) Similarly, now, pointing the machine towards NE, move in that direction along the line drawn as said in point no.10. The Machine will turn back 180 degree after few feet's of movement.
- 13) Repeat the above said procedure described in point 12 for SW and SE direction lines. Once the above said procedures are completed, click the on screen "Finish Button" to calculate for automatic depth and Bore-hole diameter display.
- 14) The screen shot of the reporting display is shown below for your reference.



Finding Metal:

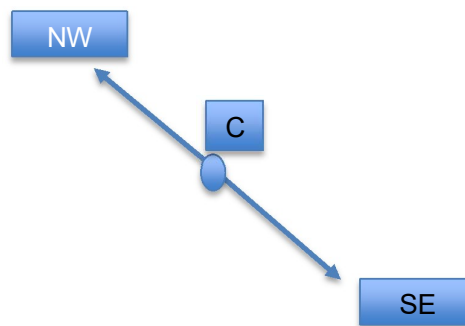
- 8) The Device is switched ON by using the ON-OFF switch on the side of the device
- 9) The unit initializes and goes to the next screen
- 10) The Device Works on 3 Languages (English, German, and French). Select your option by touching the screen.
- 11) Next Screen displays the type of search intended, select the appropriate, Water or Metal.
- 12) Selecting Water leads to depth range selection, whereas, Metal Selection leads to appropriate Metal to search. In metal selection, one can select to search for GOLD, SILVER or DIAMOND & GEM Stones
- 13) The scanning range will then appear on display. You can enter appropriate value on the screen. For example (default selection value is 200 feet). This can be incremented or decremented by the '+' symbol and '-' symbol on both sides of the scan setting range window. Minimum Default setting is 200, this cannot be decremented.
- 14) The search screen will appear, which will start the device. There will be intermittent beep sound to indicate the search in progress.
- 15) The device should be pointed or positioned towards south direction during the initial phase of the start process.



- 16) The search is started by holding the device on the hand
 - f) The device will turn towards right-side, if the target is on the right side
 - g) If the target is on the left side, the device will turn towards left-side
 - h) Device will turn back(180 degree)/rotates, when you pass/near the target
 - i) Then you can stop & point the target 5 Meter Square
 - j) After detecting the target confirm the target from each direction



- 8) Mark the center point of the target, this is defined as the Target point
- 15) From the target point, make cross lines in the direction of North (N) to South (S) and another line running from East (E) to West (W). The two drawn lines meet at target point
- 16) For calculating the target depth, now draw lines @ 45 degree in the direction of North East (NE) and North West (NW). Similarly, draw another 2 lines at 45 degree towards South West (SW) and South East (SE) as shown below:



- 17) Standing at the center point (C), press the depth calculation display on the screen, the search for depth calculation begins. Now, pointing the machine towards NW, move in that direction along the line drawn as said in point no.10. The Machine will turn back 180 degree after few feet's of movement. Return to center point.
- 18) Similarly, now, pointing the machine towards NE, move in that direction along the line drawn as said in point no.10. The Machine will turn back 180 degree after few feet's of movement.
- 19) Repeat the above said procedure described in point 12 for SW and SE direction lines. Once the above said procedures are completed, click the on screen "Finish Button" to calculate for automatic target metal depth
- 20) The screen shot of the reporting display is shown below for your reference.



WARNINGS:

1. **Make sure that all precautions are taken against risks.**
2. **Do not use your device while it is raining or on extreme weather**
3. **Turn on your device after you make sure that all parts are in place.**
4. **Make sure that battery of your device is fully charged before scanning.**
5. **If the indicator light on the unit is not glowing constant, it is time for recharge. Recharge the unit using power Bank or through Adopter**
6. **We recommend reading the user manual before start working on the device to understand everything and to avoid mistakes in doing the search.**
7. **Main unit of the device is under warranty against all electronic breakdown for two (2) years.**
8. **Damages caused by user errors (External damages, hits, harms etc.) are not covered under this warranty.**
9. **You should follow the instructions in this user manual strictly to minimize the possible faults and to use your device correctly.**